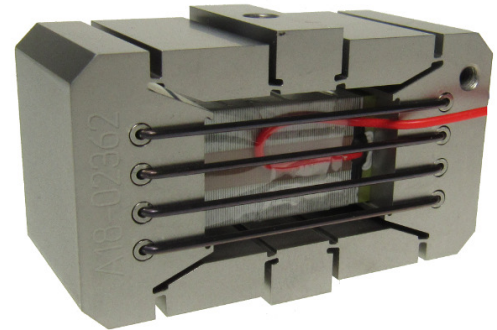


## Description

DSM's FPA is a flexure guided piezoelectric actuator useful for both dynamic and static applications. Custom mounting conditions can be integrated into the design. "E" version actuators expand when they are energized.



## Specifications

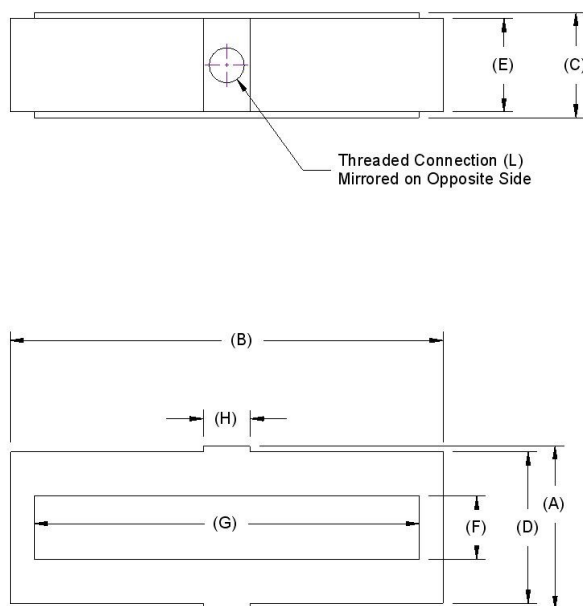
		Tolerance
Open-loop Travel ( $\mu\text{m}$ ):	200	$\pm 10\%$
Operating Voltage (V):	-30 to +150	
Stiffness in motion direction ( $\text{N}/\mu\text{m}$ ):	2	$\pm 10\%$
Unloaded resonant frequency (Hz):	790	
Blocking Force (N):	400	$\pm 10\%$
Capacitance ( $\mu\text{F}$ ):	8.00	Max
Material:	17-4 PH Stainless Steel	
Mass (g):	105	$\pm 5\%$

## Options

(Contact DSM for current option pricing)

- Vacuum compatibility
- Mounting holes: Tapped 1#2 or other custom
- Connectors: Custom wire lengths and connectors available for your project
- Non-Magnetic compatibility

## Geometry



	(mm)	(in)
Dim A:	23	0.9
Dim B:	38	1.5
Dim C:	20	0.8
Dim D:	21	0.8
Dim E:	17	0.7
Dim F:	10.8	0.4
Dim G:	29.8	1.2
Dim H:	6	0.2
Dim I:		
Dim J:		
Dim K:		
Dim L :	1_M3x0.5 on center	