

Description

DSM's FPA is a flexure guided piezoelectric actuator useful for both dynamic and static applications. Custom mounting conditions can be integrated into the design. "C" version actuators contract when they are energized.



Specifications

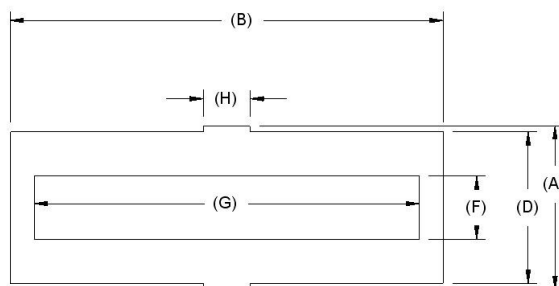
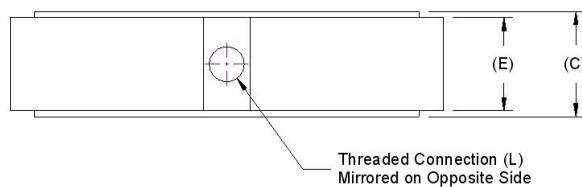
		Tolerance
Open-loop Travel (μm):	1250	$\pm 10\%$
Operating Voltage (V):	-30 to +150	
Stiffness in motion direction ($\text{N}/\mu\text{m}$):	0.29	$\pm 10\%$
Unloaded resonant frequency (Hz):	210	
Blocking Force (N):	362	$\pm 10\%$
Capacitance (μF):	32.00	Max
Material:	17-4 PH Stainless Steel	
Mass (g):	230	$\pm 5\%$

Options

(Contact DSM for current option pricing)

- Vacuum compatibility
- Mounting holes: Tapped 1#10, Top/Bottom Flange with 4 Pattern M3, or other custom
- Connectors: Custom wire lengths and connectors available for your project
- Non-Magnetic compatibility

Geometry



	(mm)	(in)
Dim A:	28	1.1
Dim B:	92	3.6
Dim C:	18	0.7
Dim D:	26	1
Dim E:	16	0.6
Dim F:	10.8	0.4
Dim G:	83.8	3.3
Dim H:	8	0.3
Dim I:		
Dim J:		
Dim K:		
Dim L :	1_M5x0.8 on center	