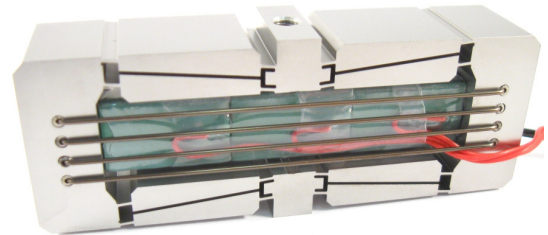


### Description

DSM's FPA is a flexure guided piezoelectric actuator useful for both dynamic and static applications. Custom mounting conditions can be integrated into the design. "E" version actuators expand when they are energized.



### Specifications

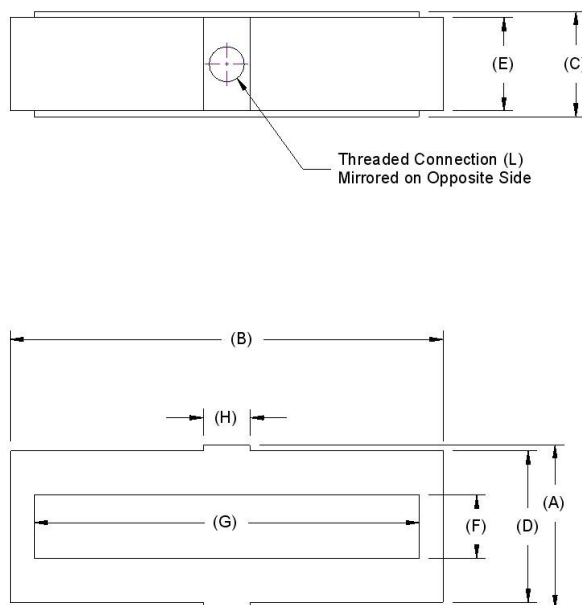
		Tolerance
Open-loop Travel ( $\mu\text{m}$ ):	1000	$\pm 10\%$
Operating Voltage (V):	-30 to +150	
Stiffness in motion direction ( $\text{N}/\mu\text{m}$ ):	0.29	$\pm 10\%$
Unloaded resonant frequency (Hz):	218	
Blocking Force (N):	290	$\pm 10\%$
Capacitance ( $\mu\text{F}$ ):	24.00	Max
Material:	17-4 PH Stainless Steel	
Mass (g):	185	$\pm 5\%$

### Options

(Contact DSM for current option pricing)

- Vacuum compatibility
- Mounting holes: Tapped 1#8, Top/Bottom Flange with 4 Pattern M3, or other custom
- Connectors: Custom wire lengths and connectors available for your project
- Non-Magnetic compatibility

### Geometry



	(mm)	(in)
Dim A:	28	1.1
Dim B:	74	2.9
Dim C:	18	0.7
Dim D:	26	1
Dim E:	16	0.6
Dim F:	10.8	0.4
Dim G:	65.8	2.6
Dim H:	6	0.2
Dim I:		
Dim J:		
Dim K:		
Dim L :	1_M4x0.7 on center	