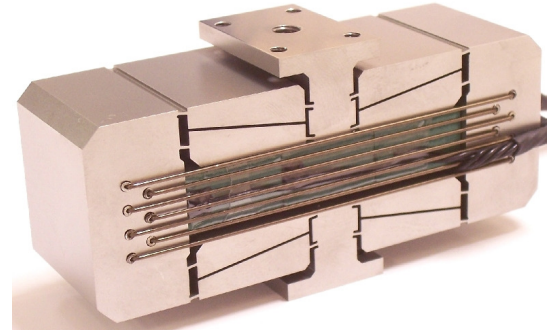


### Description

DSM's FPA is a flexure guided piezoelectric actuator useful for both dynamic and static applications. Custom mounting conditions can be integrated into the design. "E" version actuators expand when they are energized.



### Specifications

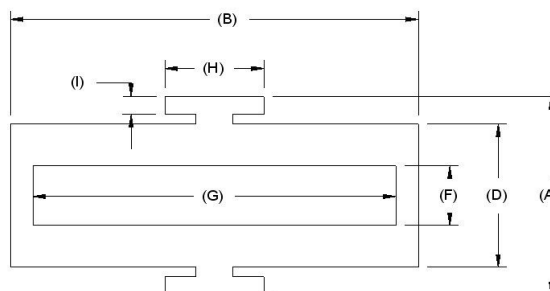
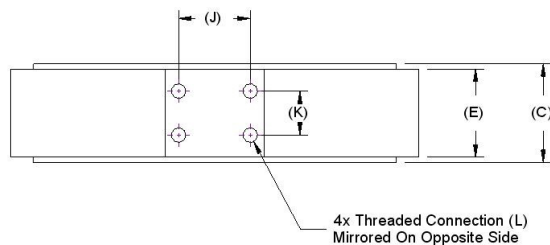
		Tolerance
Open-loop Travel ( $\mu\text{m}$ ):	550	$\pm 10\%$
Operating Voltage (V):	-30 to +150	
Stiffness in motion direction ( $\text{N}/\mu\text{m}$ ):	2.5	$\pm 10\%$
Unloaded resonant frequency (Hz):	340	
Blocking Force (N):	1375	$\pm 10\%$
Capacitance ( $\mu\text{F}$ ):	48.00	Max
Material:	17-4 PH Stainless Steel	
Mass (g):	560	$\pm 5\%$

### Options

(Contact DSM for current option pricing)

- Vacuum compatibility
- Connectors: Custom wire lengths and connectors available for your project
- Non-Magnetic compatibility

### Geometry



	(mm)	(in)
Dim A:	42.5	1.7
Dim B:	87.1	3.4
Dim C:	30	1.2
Dim D:	32.53	1.3
Dim E:	28	1.1
Dim F:	16	0.6
Dim G:	76	3
Dim H:	19.05	0.8
Dim I:	3.175	0.1
Dim J:	13.97	0.6
Dim K:	19.05	0.8
Dim L :	4_Pattern M3x0.5	