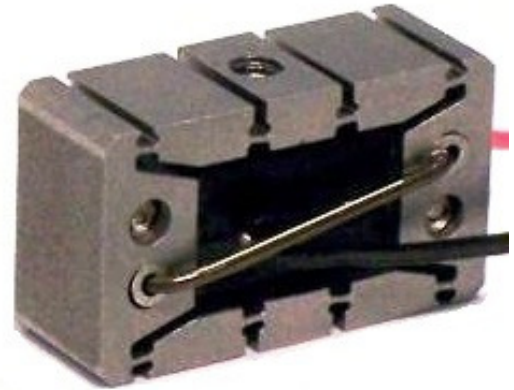


Description

DSM's FPA is a flexure guided piezoelectric actuator useful for both dynamic and static applications. Custom mounting conditions can be integrated into the design. "E" version actuators expand when they are energized.

IMPORTANT: Please note the shallow thread depth available on the FPA-0080 series actuators. DO NOT penetrate more than 2mm (0.075") with the mounting screws.



Specifications

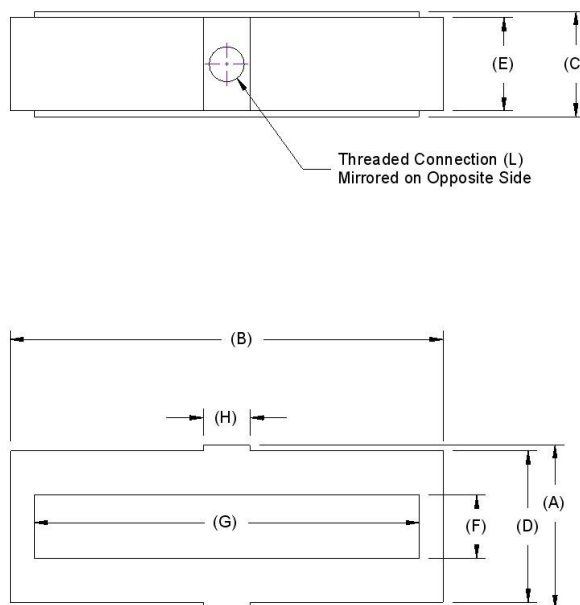
		Tolerance
Open-loop Travel (μm):	80	$\pm 10\%$
Operating Voltage (V):	-30 to +150	
Stiffness in motion direction ($\text{N}/\mu\text{m}$):	0.7	$\pm 10\%$
Unloaded resonant frequency (Hz):	1750	
Blocking Force (N):	56	$\pm 10\%$
Capacitance (μF):	0.90	Max
Material:	17-4 PH Stainless Steel	
Mass (g):	15	$\pm 5\%$

Options

(Contact DSM for current option pricing)

- Vacuum compatibility
- Mounting holes: Tapped 1#2 or other custom
- Connectors: Custom wire lengths and connectors available for your project
- Non-Magnetic compatibility

Geometry



	(mm)	(in)
Dim A:	10	0.4
Dim B:	19	0.7
Dim C:	10	0.4
Dim D:	9.5	0.4
Dim E:	8	0.3
Dim F:	4.8	0.2
Dim G:	15.8	0.6
Dim H:	4	0.2
Dim I:		
Dim J:		
Dim K:		
Dim L :	1_M3x0.5 on center	