

Description

DSM's NA series actuators are direct-drive piezoelectric actuators integrated into a protective metallic frame. The flexure minimizes the resistance that the frame might impart to the piezoelectric actuation.



Specifications

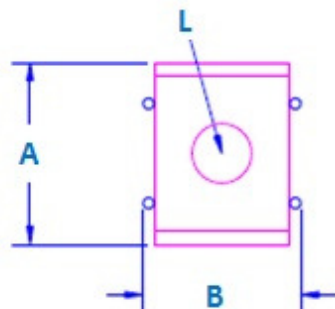
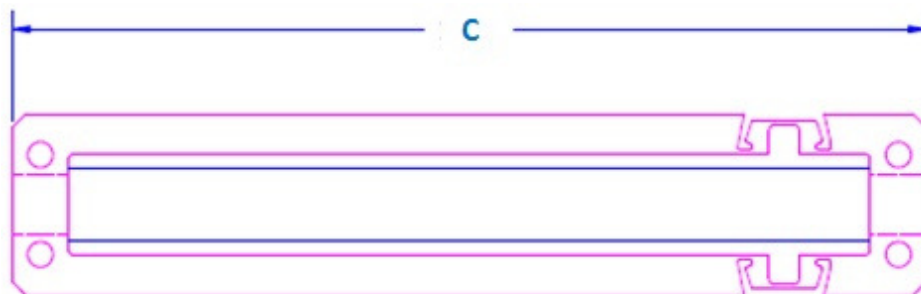
		Tolerance
Open-loop Travel (μm):	80	$\pm 10\%$
Operating Voltage (V):	-30 to +150	
Stiffness in motion direction ($\text{N}/\mu\text{m}$):	18	$\pm 10\%$
Unloaded resonant frequency (Hz):	4500	
Blocking Force (N):	1400	$\pm 10\%$
Capacitance (μF):	5.40	Max
Material:	17-4 PH Stainless Steel	
Mass (g):	55	$\pm 5\%$

Options

(Contact DSM for current option pricing)

- Vacuum compatibility
- Connectors: Custom wire lengths and connectors available for your project
- Non-Magnetic compatibility

Geometry



	(mm)	(in)
Dim A:	12.7	0.5
Dim B:	11	0.4
Dim C:	63.5	2.5
Dim D:		
Dim E:		
Dim F:		
Dim G:		
Dim H:		
Dim I:		
Dim J:		
Dim K:		
Dim L :	1_M3x0.5 on center	